

*Al-Ameen Islamic Development New Zealand*

# *North Wellington Masjid Development Project*

3 OCT 2018  
22 MUHARRAM 1440

**Agam Jaya** — Chairperson  
[info@alameen.org.nz](mailto:info@alameen.org.nz) | +64 21 366 759  
*Al-Ameen Islamic Development New Zealand*



**Al-Ameen**

ISLAMIC DEVELOPMENT  
*New Zealand*

بِسْمِ اللَّهِ الرَّحْمَنِ الرَّحِيمِ

*We begin by praising Allah, who send down The Noble Quran as guidance for mankind. May peace and blessings be upon our beloved Prophet Muhammad, who was send as a mercy for mankind, and upon his household and companions and those who followed them with goodness till the Last Day, Ameen.*

---

**Agam Jaya**  
Chairperson



Allah (SWT) says in Surah At-Tawbah, Verse 18

إِنَّمَا يَعْمُرُ مَسَاجِدَ اللَّهِ مَنِ آمَنَ بِاللَّهِ وَالْيَوْمِ الْآخِرِ وَأَقَامَ الصَّلَاةَ وَآتَى  
الزَّكَاةَ وَلَمْ يَخْشَ إِلَّا اللَّهَ فَعَسَىٰ أُولَٰئِكَ أَن يَكُونُوا مِنَ الْمُهْتَدِينَ ﴿١٨﴾

**Which means:** “The mosques of Allah shall only to be maintained by those who believe in Allah and the Last Day and establish prayer and give zakah and do not fear except Allah, for it is expected that those will be of the rightly guided.”

Since the time of Rasulullah and the noble companions (may Allah be pleased with all of them), the Masjid was not only a place of worship, but it was also a place where they learned, recited the Quran, made dhikr (remembrance) and dua (supplication), met with each other, socialized, received the delegations, prepared the expeditions and raised funds for various good causes.

As the primary religious institution, the Masjid has the greatest role in community building, and its success in performing this role is essential for the wellbeing of the community, particularly where Muslims live as minorities, such as in New Zealand. For this very reason Al-Ameen Islamic Development New Zealand was established.



# About Us

*The principles and foundations of Al-Ameen Islamic Development New Zealand*

## Al-Ameen Islamic Development New Zealand

Operating as a not-for-profit charitable trust Al-Ameen is a New Zealand registered charity (Registration No. CC53337) with eligible tax credit status (*More details available on the Charities website - [charities.govt.nz](http://charities.govt.nz)*). Al-Ameen Trust consists of a group of working professionals, community leaders and individuals coming together to volunteer and serve the community by helping to promote and increase the love of Islam and the beauty and peaceful message it brings.

The principles foundation of Al-Ameen is to:

- Pursue the individual and collective needs and aspiration of the Wellington community through spiritual, educational and counselling services.
- Develop unity, harmony and cooperation within the Muslim ummah and the wider community.
- Provide relief and support to the underprivileged and vulnerable members of the community by providing food, clothing, and spiritual care needs.

We offer a wide range of educational services and programs. Many of the educational services and programs are designed to address the modern issues faced by younger generation of Muslims living in Greater Wellington and New Zealand.

Some of the services and programmes include:

- Sunday school (madrasah) for children
- Evening Quran classes for adults and children
- Educational seminars and lectures
- Youth and adult education classes
- Holiday programmes
- Refugee and migrant assistance programmes

For a period of time, Al-Ameen was running all of these services and programs using council facilities found at the nearby Newlands Community Centre. However, since the facilities were hourly-rented and public shared with other community groups (for example Christian church and choir groups), the lack of private space, limited timeslot available and the inconvenience of having events and programme alongside other activities made it difficult to manage.

There have been numerous instances when the facilities were not available causing major disruptions to the children learning, staff and teachers managing the event and program.

For this reason it became urgent and important for Al-Ameen Trust to find alternative arrangements to run these services and programs without having those issues.



# Team

*The team driving the fundraising and development efforts.*

***The Masjid Development project is entirely driven by the volunteering Trustees of Al-Ameen (Pictured below), community members, individuals of the wider Wellington community with support from other local, national and international Islamic organisations – This has ensured that zero administrative costs are incurred. Furthermore, with the guidance and blessings of Allah (SWT), our team of specialists across many disciplines ensures that well informed decisions are made at every step of the way.***



**Agam Jaya**  
Chairperson  
[ Indonesian Embassy Officer ]



**Sh. Khaled Said**  
Imam and Religious Advisor  
[ Software Engineer ]



**Dr. Hassan Nashid**  
Deputy Chairperson  
[ Structural Engineer ]



**Mubin Shaikh**  
Secretary  
[ Accountant ]



**Plasy (Zuhri) Sos**  
Treasurer  
[ Fund Administrator ]





**Achmad Alyazani**  
Trustee  
[ Electronics Engineer ]



**Noha Ibrahim**  
Trustee  
[ Arabic Interpreter ]



**Ahmad Shahri**  
Trustee  
[ IT Specialist ]



**Saif Rahman**  
Trustee  
[ IT Technical Lead ]



**Dr. Djavlonbek Kadirov**  
Trustee  
[ Marketing Lecturer ]



**Herni Zunita**  
Trustee  
[ Financial Administrator ]



**Idayu (Ida) Binte Saidon**  
Trustee  
[ HR Officer ]



**Farook Khan**  
Trustee  
[ Account Manager ]



**Kieran Shahanan**  
Trustee  
[ Airforce Officer ]



**Mukhtar Shaikh**  
Trustee  
[ Metal Fabricator ]



**Dr. Musab Hassan**  
Trustee  
[ Medical Doctor ]



**Ashraf Zaman**  
Trustee  
[ Electrical Engineer ]



**Sakirin Sapeas**  
Trustee  
[ Economist ]



**Dr. Salman Ashraf**  
Trustee  
[ Geoscience Scientist ]



**Yusri (Ricky) Bin Yusof**  
Trustee  
[ Maintenance Engineer ]



**Zaid Al-Dabbagh**  
Trustee  
[ UI/UX Consultant ]



# Masjid Al-Ameen

*Establishing an Islamic centre for hosting congregational prayers and community events.*



## **Al-Ameen's Masjid Establishment**

Alhamdulillah with the grace of Allah , in May of 2016, with the support of the community and the children Al-Ameen Trust leased a commercial property at 64 Kenmore Street, Newlands, and has since established a council-approved Masjid on this leased property. The property was renovated with the assistance of the community and since operational Al-Ameen Trust has been able to consistently deliver these services and programs with ease. In addition, the Masjid is now able to offer the following services to the community:

- Five Daily Congregational Prayers (Salah)
- Friday Congregational Prayers (Jumuah)
- Ramadan Congregational Prayers (Taraweeh)
- Eid Congregational Prayers (Eid-ul-Fitr and Eid-ul-Adha)

The Masjid is currently operating from a leased commercial property with two units rented for Al-Ameen. Both units can accommodate up to 80 men and 50 women.

With the Masjid having 24 hours access the number of people coming regularly is rapidly increasing to a point where we have now faced with not being able to accommodate everyone, especially when having those major services such as the Ramadan congregational prayers.

The Masjid is located along major transport routes and is only 15 minutes away from Wellington City. Being very close to the CBD makes Al-Ameen easy to get to for the working professionals as well as those from the northern suburb area.

The northern suburb area is regarded as an attractive and active place with many diverse communities. Based on the official data collected by Statistics NZ the northern suburb area is steadily growing and with New Zealand being one of the countries that openly welcome refugees from countries such as Syria, the majority is now settled in the northern suburbs.

In recent years property prices in the northern suburb have steadily increasing and with our next generation becoming more professional it is clear that there will be more and more Muslims either living, working or studying in the Wellington region. The northern suburb is also a permanent home for many high commissions and embassies with increasing number of staff and families frequently use the Masjid since they are also living in the surrounding suburbs.





Grand Iftar



Shaikh Khaled Sunday Program



Community Outing



Girls School Prize Giving



Community Friday Bazar



Community Open Day



Boys Sleepover



Global Dawah Team



Masjid Renovation



International Speaker



Family Fund Day



Community BBQ





# Current Issues

*Some of the challenges faced by the trust and how we wish to move forward*

## Challenges faced today

Al-Ameen has been running successful services and programs for the last two years by leasing out properties. We've grown from being a centre used under 50 people to one that is being used by more than 500 people per week.

Many of our programs and events organized at Al-Ameen Masjid are very well received and attended. The weekly Friday prayers are normally attended by more than 80 men, teenagers and children. In addition, the Sunday school (madrasah) has an enrolment of over 117 boys and girls, aged from 5 to 16 years old.

On special occasions, such as during Ramadan Iftar and regular religious lectures, it is encouraging to see constantly large crowds from the community attending. However on numerous occasions, the Masjid was barely able to accommodate everyone.

It is clear that the current Masjid has limited capacity to adequately cater the increasing needs of the growing community. With the anticipated growth of the Muslim community in the northern Wellington suburbs, it has become a necessity for Al-Ameen Trust to now plan ahead for this growth.

## New Masjid Development

With the grace of Allah (SWT), the trustees of Al-Ameen with the backing of the community is today launching a year long fundraising effort to fund the North Wellington Masjid Development - Hence what we're calling the NOW Project, to accommodate for the increasing needs of our growing community and future generations. Based on the current property prices and the timing of land available for sale there are two options that are viable.

### Option 1 - Purchase and redevelop the current rented property

Al-Ameen Trust has been offered to purchase the current leased building which has potential for further development to better meet the growing needs of the community. Under the current Council zoning rules the property has the potential to be constructed up to 8 metres vertically for a second level.

### Option 2 - To purchase land in the northern suburb area to Permanently build a new home for Al-Ameen

Currently Al-Ameen is actively looking at the option of purchasing vacant land parcels in close proximity to Newlands and Johnsonville. The suitability of this land for any future purpose and development of the Masjid can be created to meet the growing needs of the community.



THE **n o w** PROJECT

**NORTH WELLINGTON**  
*Masjid Development Project*

[nowproject.nz](http://nowproject.nz)





# Project Objectives

*Establishment of a modern Masjid in the northern suburbs of Wellington*



***To build a permanent, modern and environmentally sustainable Masjid in the northern suburbs of Wellington New Zealand to meet the growing Muslims population; increased demand for expanded Islamic services and teachings; and mounting needs for more consistent support and relief to the underprivileged and vulnerable members of the community.***

## **Conceptual Design**

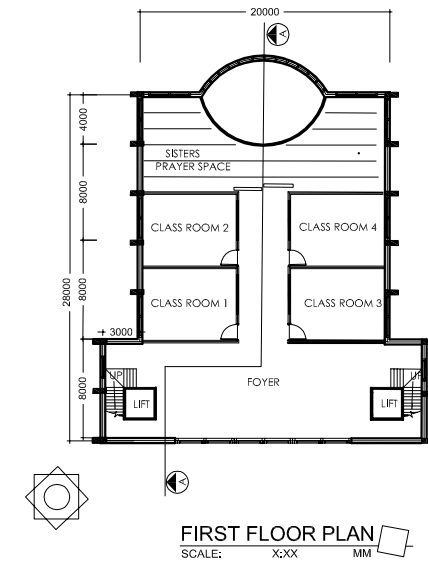
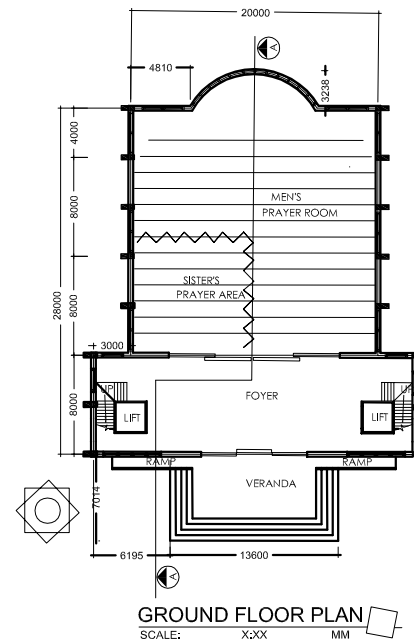
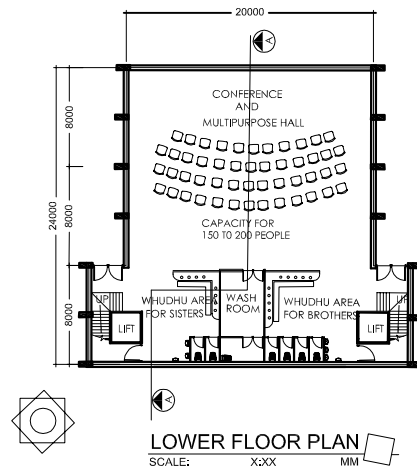
To meet the project objective the proposed conceptual design is based on the following features and can be adopted for both of the above proposed options:

- Praying area for men and women capable of joining and separating to cater for specific events.
- Wudu area sufficient to cater for large community gathering.
- Janaza area sufficient to hold essential equipment and materials.
- Multi-purpose spaces for teaching, meetings, conferences, visitor accommodation.
- Creative spaces for library, displaying and storing teaching resources and educational materials.
- Commercial kitchen capable of cooking for large community events.
- All weather area for children activities, BBQ and outdoor activities.



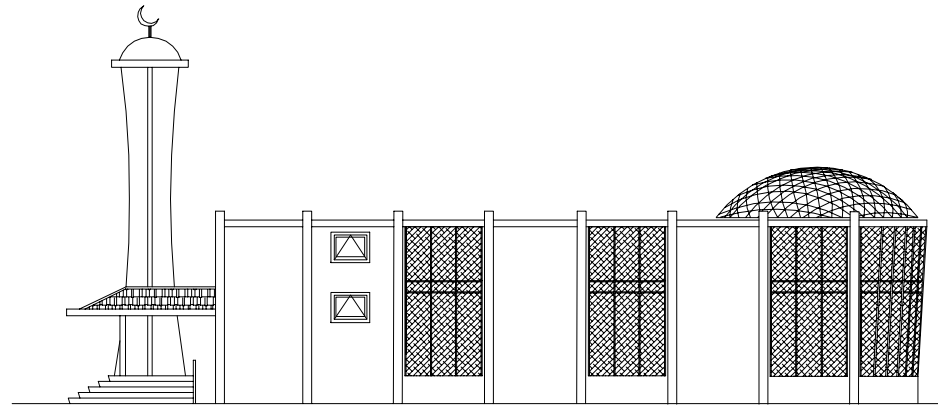
# Plans – Floor Plans

Lower Floor Plan, Ground Floor Plan and First Floor Plan drawings.

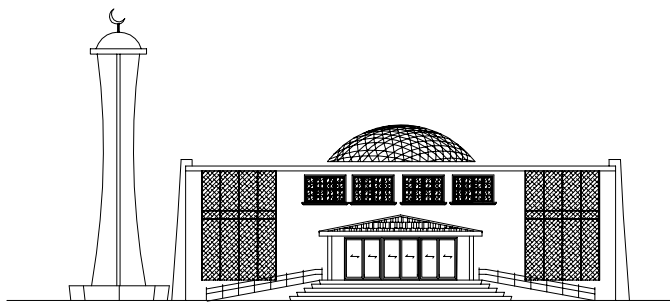


# Plans – Elevations

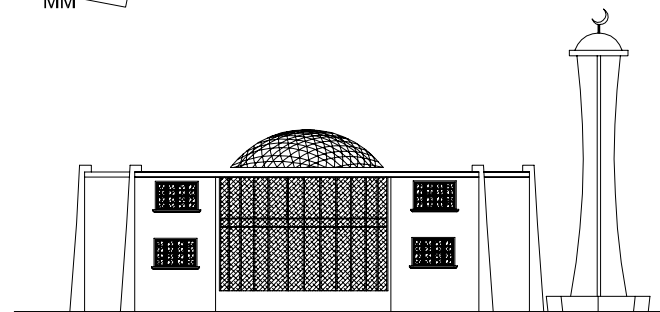
Front Elevation, Side Elevation and Rear Elevation drawings.



**SIDE ELEVATION**  
SCALE: X:XX MM



**FRONT ELEVATION**  
SCALE: X:XX MM

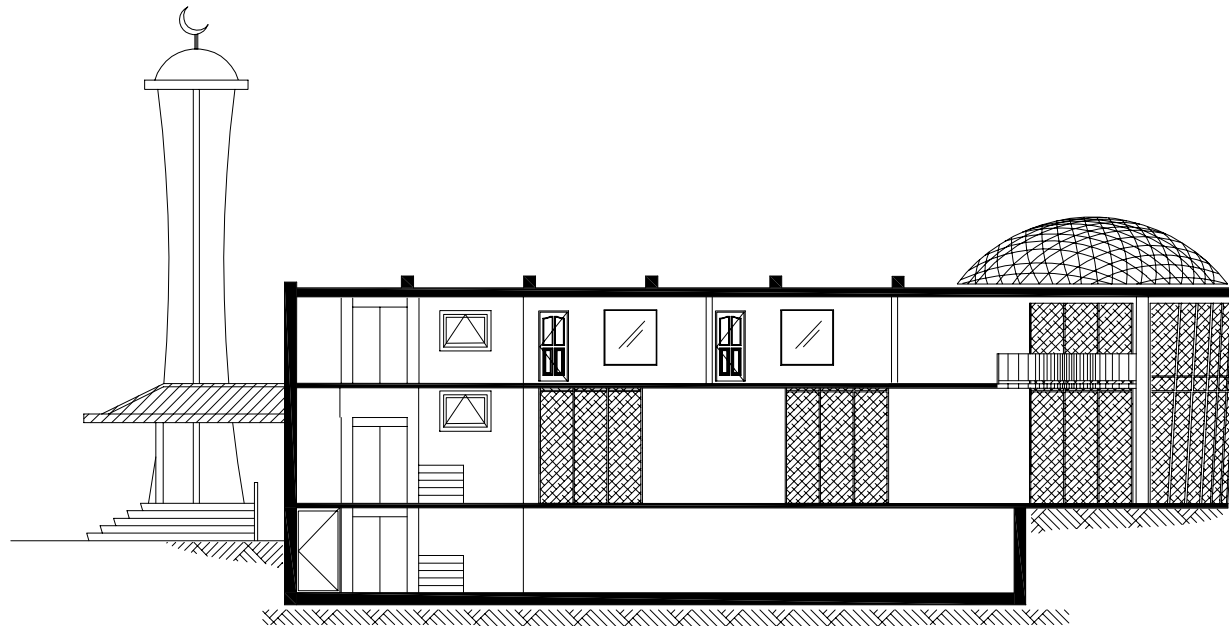


**REAR ELEVATION**  
SCALE: X:XX MM



# Plans – Section Through

*Masjid cross section drawings.*



SECTION THROUGH A-A

SCALE: X:XX MM



# Cost Estimation

*Our fundraising status, what we have collected so far, community pledges and targets.*



## Project Funding Status

Al-Ameen Trust has over \$100k of funding available dedicated to the development of the mosque. Ongoing fundraising and seeking local and international donors will be a focus for the next 18-36 months to have the opportunity to undertake the proposed options.

Al-Ameen Trust is ramping up the effort over the next 12 months to seek support to establish a permanent home for Al-Ameen, in the northern suburb, to continue to increase the value we add to the Muslims who are living, working, studying or simply visiting the Wellington region.

## Estimated Project Costs

**Option 1** - The purchasing and redevelopment of the current rented property is estimated to cost \$1.5m (excluding any upgrading or renovation costs).

**Option 2** - The purchasing of land and build a new mosque is also estimated to cost around \$1.5m (excluding any Council approval, engineering reports and building design costs).





# Appeal

*The NOW project is only achievable through the blessing of Allah (SWT) and your support.*



## **Your support is needed**

As Allah has instructed in Surah At-Tawbah verse 18, it is incumbent upon every Muslim to contribute to the maintenance of the mosques.

We sincerely and humbly request your assistance and support to contribute and partake in the development of Al-Ameen Masjid, whether be it small or great; and whoever does good to the weight of an atom shall see it.

## **Ways to Donate**

We accept donations in the following ways:

- Bank transfer
- Cheques and postal orders
- Online donation

## **Bank Transfer**

Recipient name: Al-Ameen Islamic Development New Zealand  
Account number: 38-9017-0648533-02  
Swift Code: CITINZ2X  
Bank address: Kiwibank, 28 Johnsonville Road, Johnsonville, Wellington 6037, New Zealand

## **Cheques and Postal Orders**

You can also post your cheques or postal orders to:

Al-Ameen Islamic Development New Zealand  
PO Box 26006  
Newlands  
Wellington 6037  
New Zealand

Please make your cheque payable to:  
“Al-Ameen Islamic Development New Zealand”.

## **Online Donations**

For your convenience, we have now setup a PayPal account which means you can donate using your credit card (Or Visa Debit car) from anywhere in the world. Find out more at [www.alameen.org.nz/donate](http://www.alameen.org.nz/donate)



Allah (SWT) says in Surah Al-Baqarah, Verse 245

مَنْ ذَا الَّذِي يُقْرِضُ اللَّهَ قَرْضًا حَسَنًا فَيُضَاعِفَهُ لَهُ أَضْعَافًا كَثِيرَةً وَاللَّهُ يَقْبِضُ  
وَيَبْصُطُ وَإِلَيْهِ تُرْجَعُونَ ﴿٢٤٥﴾

*Which means: “Who is he that will lend to Allah a goodly loan so that He may multiply it to him many times? And it is Allah that decreases or increases (your provisions), and unto Him you shall return.”*

May Allah bless you for your sincere donations and may Allah grant you happiness and success in this world and in the hereafter, Ameen.

### **More information**

Al-Ameen Trust will be more than happy to provide more information (such as building plan, architectural design, government valuation report etc) pertaining to this proposal. Please do not hesitate to email us at [info@alameen.org.nz](mailto:info@alameen.org.nz) (attention: The Chairperson) with your enquiries.

#### **Connect with Al-Ameen**

🌐 [alameen.org.nz](http://alameen.org.nz)

✉ [info@alameen.org.nz](mailto:info@alameen.org.nz)

📌 [/alameen.nz](https://www.facebook.com/alameen.nz)

#### **Follow project progress**

🌐 [nowproject.nz](http://nowproject.nz)

📌 [/nowproject.nz](https://www.facebook.com/nowproject.nz)

